

Human Dimensions Collaborative

Bridging Communities & Ecosystems



Overview: what we did

- ESA Human Ecology Section long range development grant
- What is The Challenge (from your perspective)
- Can I See How You Think? Using causal loop diagrams to depict our mental models
- Developing focus variable – what needs to change?
- Thinking together – pair blending our diagrams
- Engaged contribution to issue of substance – how do ESA members adopt and apply ESA's code of ethics?
- Future projects – what can we do together?
- Next steps
- Social gathering (only for those who can get a taxi to come)

ESA Human Dimension Collaborative | Agenda, Framework for the Day

ESA Human Dimensions Collaborative: Agenda

9:00-9:30 Welcome & Introduction
9:30-9:45 Demo: Casual Loop Diagram
9:45-10:00 Activity: Your CLD (Focus Variable)
10:00-10:10 Show and Tell
10:00-10:45 Pair Blending (15 MIN) ☕ COFFEE BREAK
11:00-11:20 Show and Tell
11:20-11:45 Pairs of Pairs (4) Blending *Goals
11:45-12:30 Show and Tell, Group Discussion common themes
Lunch 12:30-1:30
1:30-3:00 COMMON FRAMEWORK Research Ethics COMMUNITY ENGAGEMENT
3:00-3:30 ☕
3:30-5:00 Define a PROJECT PROPOSAL
5:00-5:30 Next Steps

Graphic Recording by: Katalyst Creative Consulting

ESA Long Range Section Development Grant

- ESA goals relating to sustainability, social justice, ethical research, policy relevance and community engagement
- Earth Stewardship, ESA Engagement 2.0, Extending the Tent
- ESA *also* has sections whose focus is on precisely these human dimensions of ecology and ecological applications
- Most are small (Applied is not) and struggle to be heard
- Can we be more effective if we play together? – no ambition to ‘merge’ but to integrate our collective insights
- Long history of doing this eg; Ignite Sessions, bio-blitz, Mega-Mixers, Joint Awards, Symposia and Organized Sessions
- Human Ecology LRDG *to bring together several ESA sections that are oriented around human dimensions of environmental problems and the unjust distribution of their burdens*



Human Dimension section chairs after 2018 *Expanding Ecology* Ignite session – photo by (presumably) Sarah Anderson (Policy) – because she is not in the photo

What is The Challenge?

What do YOU want to see change?

'Working together to build bridges'

'More diverse career pathways'

'Develop hybrid open learning platforms'

'Improve policy, better understand issues, constituencies, pathways, and processes'

'More diversity and inclusion, bottom up questioning and agitation for change'

'Greater participation and community interaction'

'Break down disciplinary silos'

'Change how people think in order to change how they behave'



Focus Variable and Blended Diagrams

Can I See How You Think?

Each attendee created a loop diagram depicting the challenge they were looking to solve (focus variable) with three driver variables and three outcomes (affected) variables

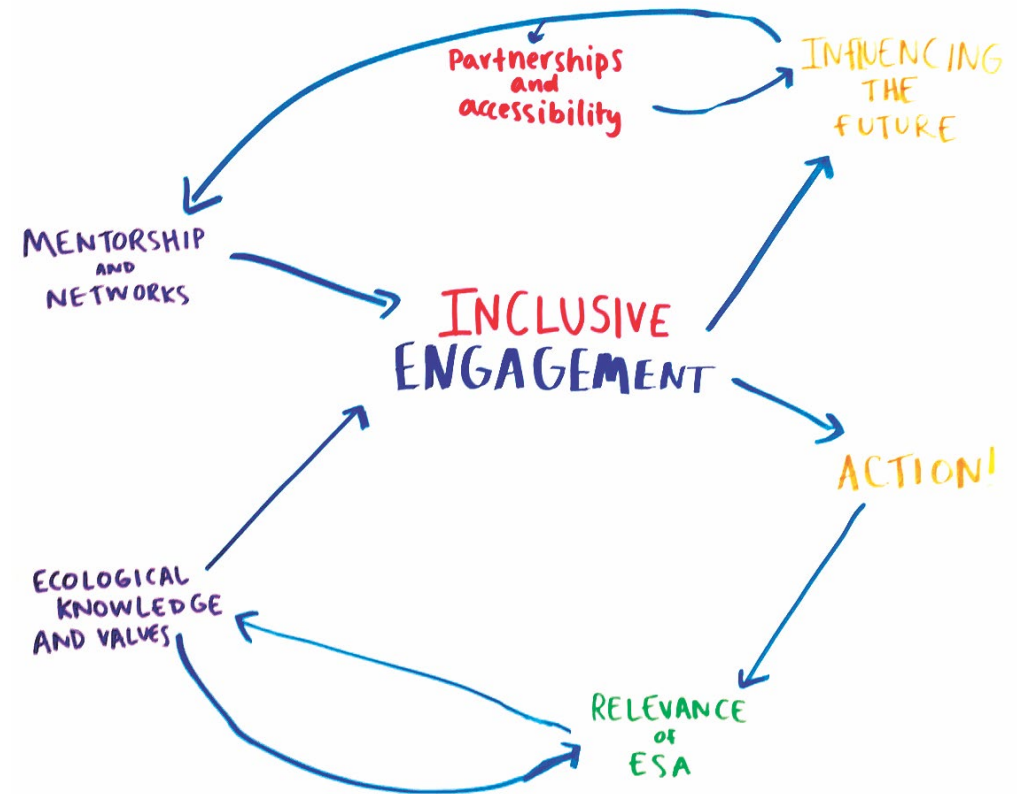
Attendees paired up and combined their focus variables to create one common diagram that captures the intent of each individual. Where possible, loops between affected and driver variables were found. The image depicts the blended diagrams with Focus Variable in pink.

Goal: consensus on 1-2 challenges.



ESA Human Dimension Collaborative: Final Loop Diagrams

- Focus variable – how to drive change in ‘amount of inclusive engagement’ (ideally, to increase it!)
- This would affect ESA ability to influence the future, in turn creating partnership and opportunities. This would affect mentorship and networks, feeding back to affect levels of inclusive engagement.
- Loop is a virtuous reinforcing cycle, but if inclusivity went *down* it would drive down all the others too
- Inclusivity influences action (change in the world) affecting ESA relevance. The affects the influence of ecological knowledge and values in decision processes

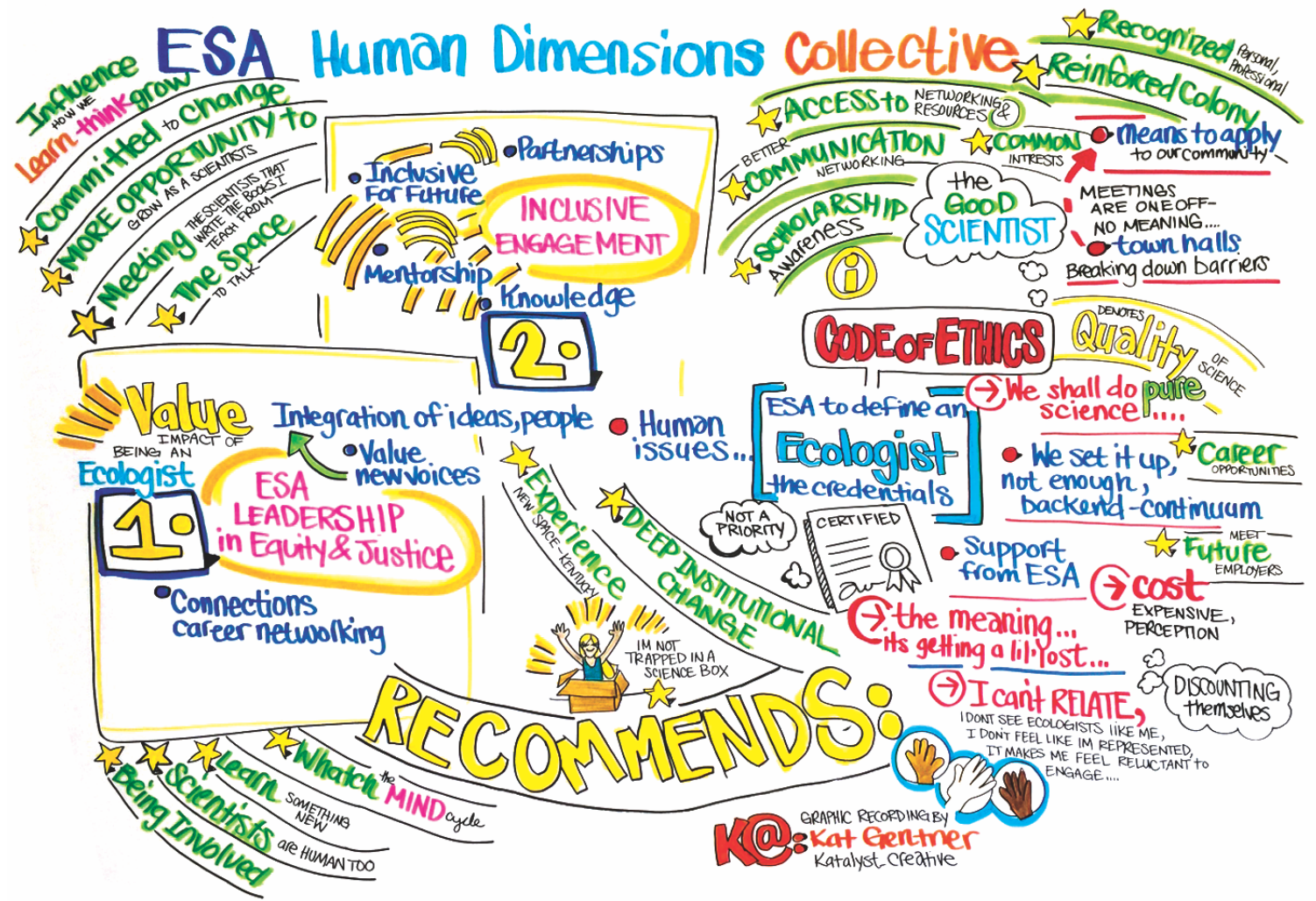


Human Dimension Collaborative Contribution

The resulting chart is a product of our thinking, a blending of challenges we face, placing importance on two variables the ESA Human Collaborative can focus on in building a framework for progress moving forward.

In planning for progress the Human Dimension Collaborative discussed the importance of the framework and its current code of ethics. The chart highlights the insights and the positive benefits the ESA brings to current members.

Central is ESA leadership in equity and justice issues and its capacity to practice inclusive engagement, both informed by ethical commitment



Next Steps – Building a Common Framework

The Human Dimension Collaborative recommends focusing on two variables

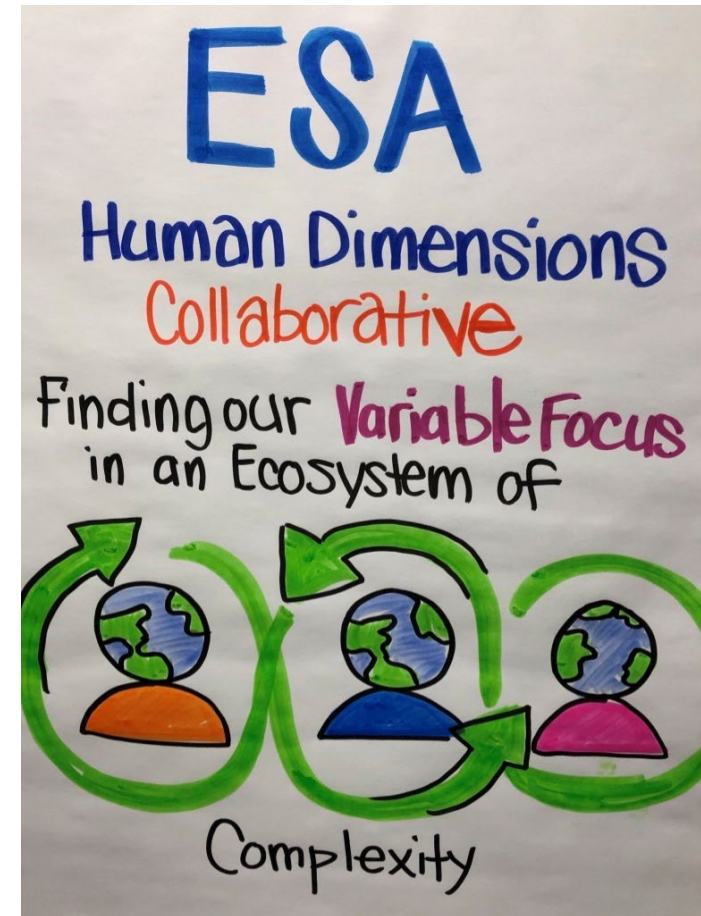
- ESA Leadership in Equity and Justice, showcasing the value of an Ecologist and in valuing new voices and integrating new ideas.
- Inclusive Engagement for the future, vetted in the dissemination of knowledge, creating career opportunities, mentorship and partnerships.

Proposal to ‘practice what we preach’, develop a framework to create active community participation by Utah 2020. The stars denote, ways to build community, how to guide to leave a legacy of change from future ESA conferences



Salt Lake City 2020

- Bring back the Mega Mixer
- Organized Session **Building the Future Together: Extending Ecology's Human Dimensions** Classically educated ecologists often have little to no training on approaches or techniques to engage with the human dimensions of complex environmental problems. This session will present such methods and discuss the unjust distribution of most environmental burdens, as well as pragmatic approaches to help communities meet environmental challenges
- Ignite Section show-and-tell session
- Propose that ESA commits to work with local communities and leave a legacy of improved environmental management into its annual conference program, demonstrate at SLC, practice Long Beach onwards (explore funding or sponsorship dimensions)



Get involved!

- Come to ESA 2020 Salt Lake City, attend the Organized Session and Ignite session, come to our business meeting and attend the Mega Mixer (all TBC) – look for community engagement announcements
- Become a member of the Human Ecology Section – included in your ESA membership fees (join 2nd section for \$5)
- 10 members of the student section can join Human Ecology Section for free (email rob.dyball@anu.edu.au)
- Visit HE section page hosted on <http://societyforhumanecology.org> (HE@ESA)
- Follow us on Twitter @humanecology and Facebook
- Read Human Ecology Review (free open access <https://press.anu.edu.au/publications/journals/human-ecology-review>) – a history of Human Ecology in ESA is in vol 23:2
- Join Society for Human Ecology (SHE) and come to the conference in Brazil 2020 <http://societyforhumanecology.org>
- Volunteer and get active with any of the Human Dimension sections and help develop the initiative